

LONG DISTANCE ROMANCE

GENE GOWE
MIKE SEIFRIED

F6 E7(b9) A13(b9) D7 D7(MA7)

YOU'RE ON ONE COAST AND I'M ON A - NOTH - ER. DID - N'T
GO WITH OUR FRIENDS TO A REST - AURANT, AND THEY
FAIR, IF I ASK YOU TO GIVE UP WHAT YOU'VE

B7(b9) E7 A7 D7 G7

5 PLAN IT, JUST WORKED OUT THAT WAY. THAT'S WHAT HAP - PENS WHEN CAR -
ASK ME HOW YOU'RE GET - TING ON, I SMILE BRAVE - LY AND I
WORKED VER - Y HARD TO A - CHIEVE. HOW DID WE THINK WE COULD

Bb7 Eb9 A7 D9 B7(b9)

10 REERS COME IN BE - TWEEN US. IT'S NOT EAS - Y TO
TELL THEM THAT YOU'RE DO - ING JUST AS WELL AS YOU
DO THIS TO BE - GIN WITH? TELL ME, WHAT WERE WE

Bb13 A7 Ab7 D7MA7 Gb7b9 F6

14 COPE, WHEN OUR LIVES SEEM IN DISAR - RAY. THERE ARE TIMES WHEN I'M
COULD BE, EV - EN THOUGH THAT YOU'RE GONE. THEY ALL KNOW IT'S A
THINK - ING? COULD WE BE SO NA - IVE? STILL, I KNOW THAT OUR

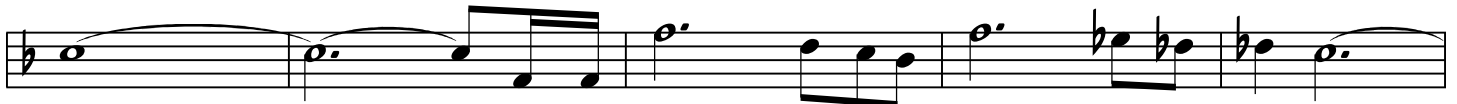
LONG DISTANCE ROMANCE

E7(b9) A13(#9) D7 C7sus4 F7 E7(b9) B13



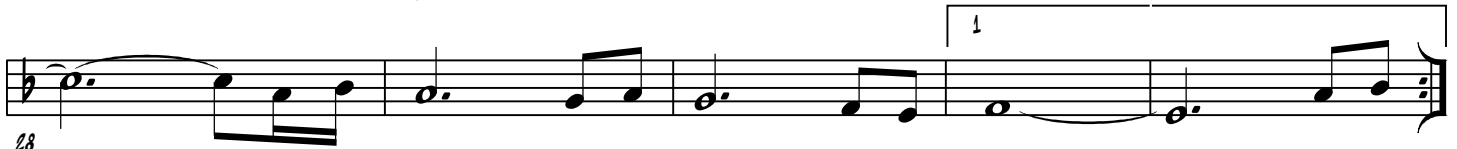
FEEL GAME LOVE LING SO LONE LY. THAT I'M PLAY - ING. IS EN - DUR - ING. THAT I SIT WHEN I HIDE THIS IS MORE HERE AS IF MY FACE, LOOK - ING A - THAN A MERE GAME OF IN A

A7 C7 F7 Bb Bbm AM7



TRANCE. SKANCE. CHANCE. THERE'S AN ACHE I'M NOT GOOD AND IN TIME THAT I FEEL AT - DIS - GUISE - DEEP IN - SIDE ME. WE WIL BE BACK TO - GETH - ER ING MY FEEL - INGS

D7 G13 C7sus4 F#MA7 FMA7



THAT'S THE PRICE OF LONG - DIS - TANCE RO - MANCE. AND THE PAIN OF LONG - DIS - TANCE RO - MANCE. AND SUR - VIVE THIS LONG - DIS - TANCE - RO WHEN I IT'S NOT

F#Δ13 FΔ13



MANCE.